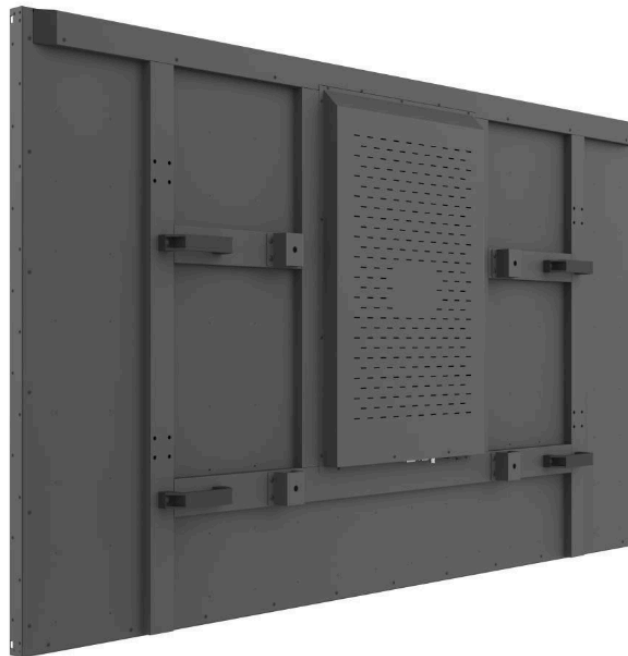


75 inch ultra narrow edge 4K splicing monitor product specification



Product features

Full hardware architecture, professional chip design without CPU and operating system

Multiple lines in parallel processing, powerful processing function;

Integrated multi-channel video signal source

Built-in firmware intelligent upgrade system.

Narrow frame all metal outer frame design

It has 3D noise reduction, 3D filtering and 3D interlacing removal

It is energy-saving, environmentally friendly and radiation-free, supports 7*24 hours of non-stop operation, and can adapt to various working environments requiring long time on.

Uniform brightness, stable image, no flicker, no distortion
Suitable for: commercial institutions, large shopping malls, security monitoring, chain franchise stores, hypermarkets, star hotels, restaurants, travel agencies, government enterprises and so on.

Product Specifications	
Product Specification Details	Product Series Narrow Bezel 4K Video Wall Monitor
Screen Size	75 inches
Appearance color	Black
Border thickness	6MM

1

Product Parameter

输入/输出接口	
USB import	1个USB2.0, Max 480Mbps
Audio amplifier output	Built-in speaker interface, up to 8Ω 10W dual-channel speaker output
Signal input	<ul style="list-style-type: none"> • Supports 1 HDMI input (version 2.0) with maximum resolution of 3840x2160 @ 60Hz • Supports 1 DVI signal input (maximum resolution 3840x2160 @ 60Hz) • Supports 1 VGA and 1 AV inputs • Equipped with RJ45 ports for infrared receivers and RS232 interface for device control and debugging • Features 1 USB port for software updates • Supports 180-degree image rotation
Electrical performance of the machine	
Motherboard model	MT-790 PA (4K)
Power board specifications	75 inches
	PW288W2.801
Input	100-240V~, 50~60Hz, 3.8A, Max
Power consumption of the machine	75inches:255W
Speaker power	2×15W(8Ω) THD+N<10%@1KHz (Audio Input: 0.5VRMS)
Main Hardware Details	
Size model	75inches
internal storage	ull hardware architecture, no memory, no storage
Built-in memory	Nonsupport
Memory expansion	Nonsupport
WiFi	Nonsupport
Operating system	Full hardware architecture, no CPU and operating system
Decoding resolution	Maximum resolution 3840X2160 60Hz

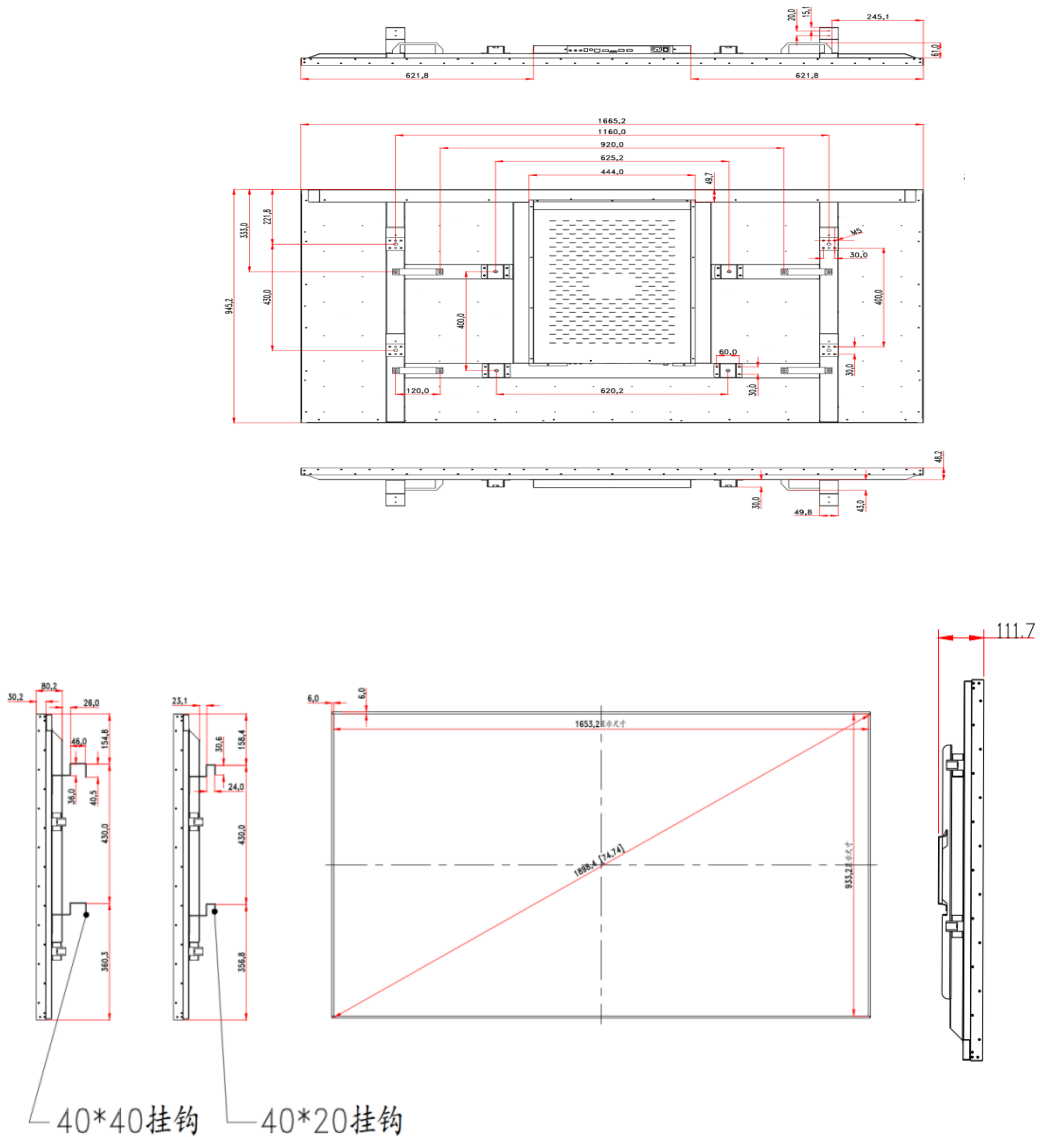
2 Product Specifications

Display performance parameters	
Pmodel	9375C
Type of backlight	DLED
Display size(mm)	1653.2 (width) × 933.2 (height) mm
Physical resolution	4K (3840 x 2160)
Overall peak brightness	500cd/m ² ±30
Dynamic contrast	4000:1
Dynamic contrast	178/178(Typ.)(CR≥10)
Dynamic contrast	16:9
Display colors	16.7M (8-bit)
Operating Frequency	60Hz
Structural dimensions (unit: mm)	
Product model	9375C
Overall dimensions (length × height × thickness)	L1665.2 x H945.2 x 80.2
Outer box packaging size (length × height × thickness)	L1795 x H1070x W250
Net Weight of Bare Unit (KG)	41.5kg
Gross Weight of Overall Unit (KG)	45.5kg (single unit packaging)
Wall mount dimensions	There are two ways to hook it up. See the view below
VESAhole size	See the hexagonal view below
Wall-mounted screw specifications	M5*8、M5*6、M6*10

The peak brightness of the whole machine will be different depending on the LCD glass model. The data indicated in this specification book is for reference only!

3 Six-Side Views

2.1 Installed size (75 inches)



4 scene display exhibition of scene



指挥中心



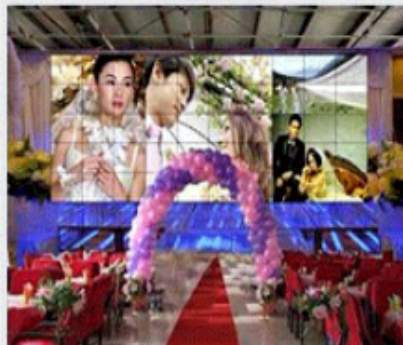
会议室



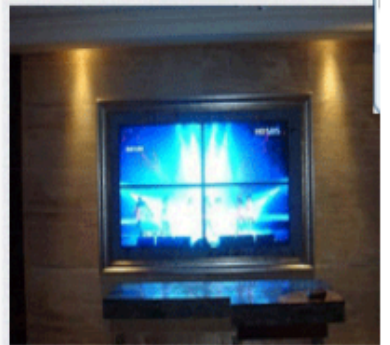
监控中心



展厅



婚庆礼仪



KTV